

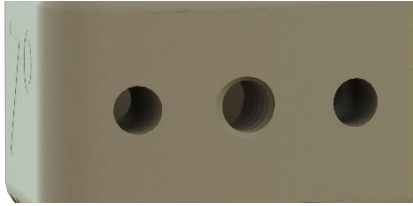


Cervical Interbody



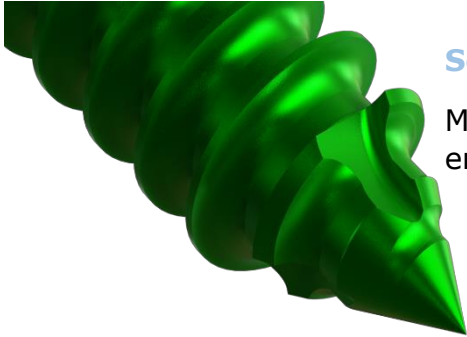
Integrated HA means Better Bony Apposition, while Maintaining Superior Radiolucency and Optimal Modulus of Elasticity

Cervical Interbody



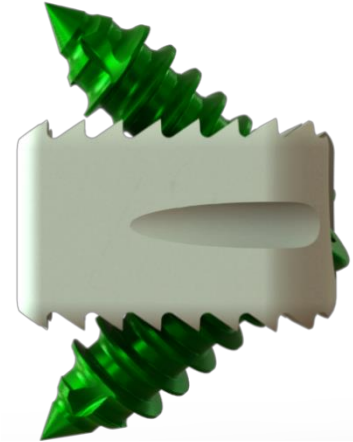
Superior Control

Threaded inserter attachment with additional control surfaces ensure precise implant placement



Self-Tapping Threads

More secure bone engagement



Self-Locking Screws

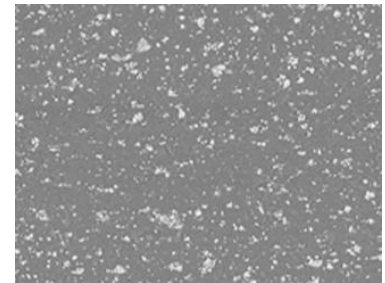
Screws thread into PEEK-HA, locking themselves to the Interbody Device as they thread into the vertebral body at variable angles

PEEK-OPTIMA™ HA Enhanced

Superior material maintains radiolucency and optimal modulus of elasticity, while encouraging bone in-growth.

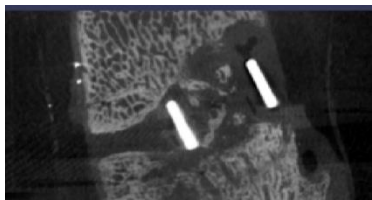
Studies show greater new bone formation at 6 weeks (below), higher quality of new bone bridging at 6 and 12 weeks, and bone ongrowth on the endplates and all faces of the interbody device.

for more details <https://invibio.com/materials>

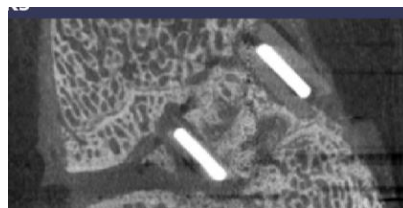


Integrated HA

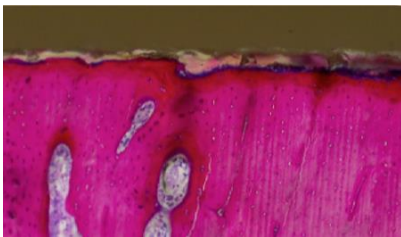
Fully integrated HA means an osteoconductive surface throughout the implant (surface at x1800 magnification)



PEEK-OPTIMA™ Natural



PEEK-OPTIMA™ HA Enhanced



PEEK-OPTIMA™ Natural



PEEK-OPTIMA™ HA Enhanced

Better Bone Apposition

Earlier bone ongrowth with >75% direct bone contact after 4 weeks and enhanced bone apposition at 12 weeks



order@spinedirectonline.com
877-888-SPINE