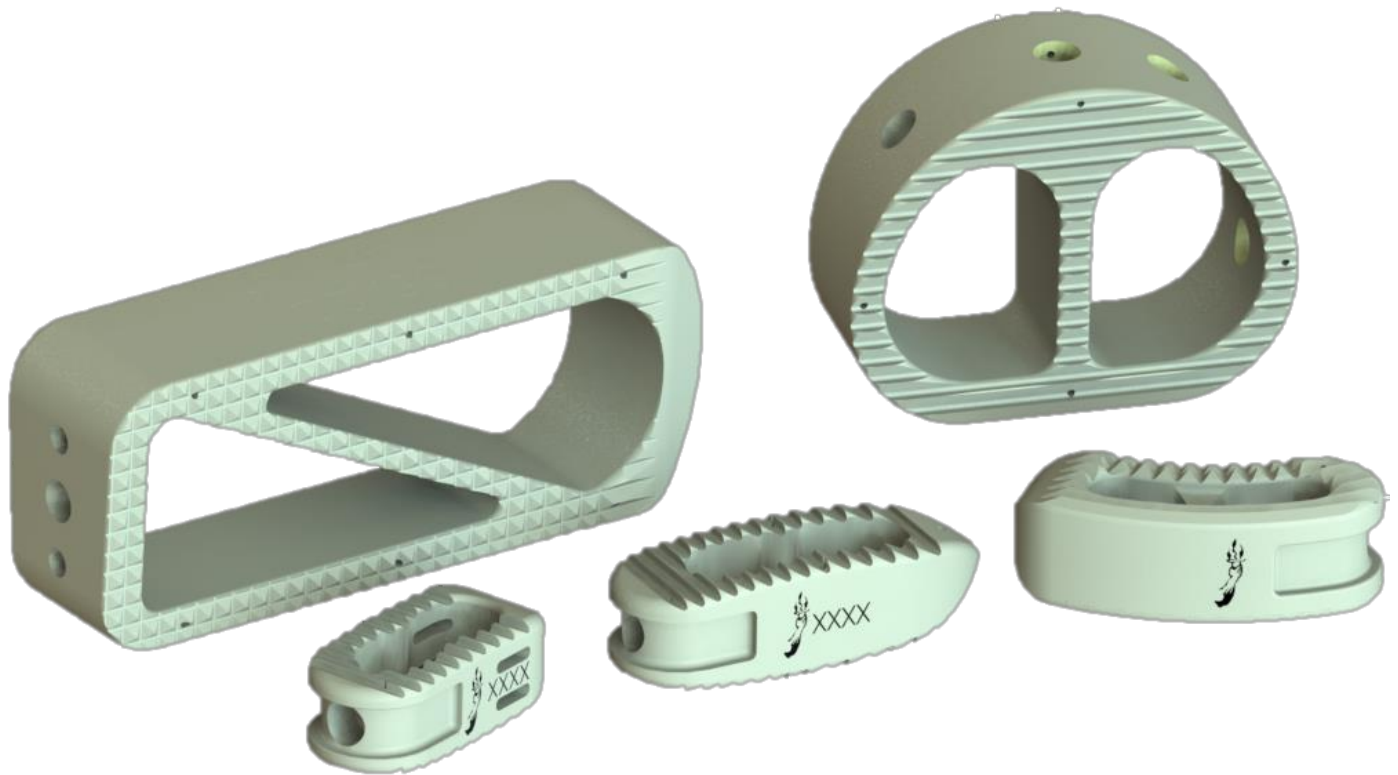


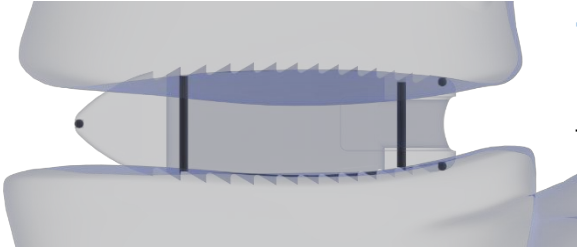


Lumbar Interbody



Integrated HA means Better Bony Apposition, while Maintaining Superior Radiolucency and Optimal Modulus of Elasticity

Lumbar Interbody



Tantalum Markers

Bold, easy to read radiographic Tantalum Markers

Expansive Sizing Options

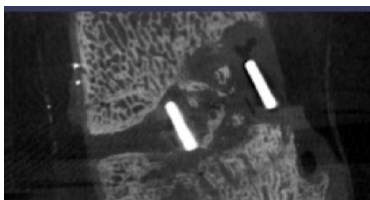
- Anterior
 - Posterior
 - Lateral
 - Transforaminal
 - Oblique
- Multiple Footprints
 - Various Lordotic Angles
 - 6-14mm Heights

PEEK-OPTIMA™ HA Enhanced

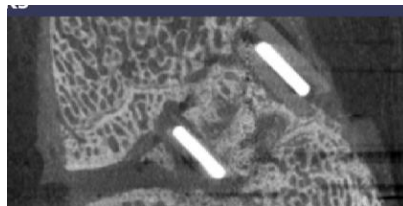
Superior material maintains radiolucency and optimal modulus of elasticity, while encouraging bone in-growth.

Studies show greater new bone formation at 6 weeks (below), higher quality of new bone bridging at 6 and 12 weeks, and bone ongrowth on the endplates and all faces of the interbody device.

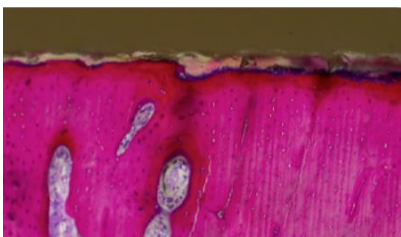
for more details <https://invibio.com/materials>



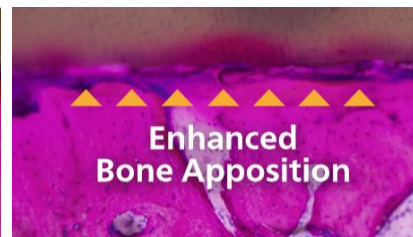
PEEK-OPTIMA™ Natural



PEEK-OPTIMA™ HA Enhanced



PEEK-OPTIMA™ Natural



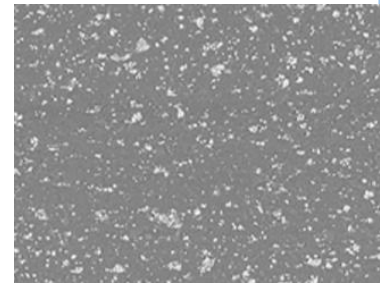
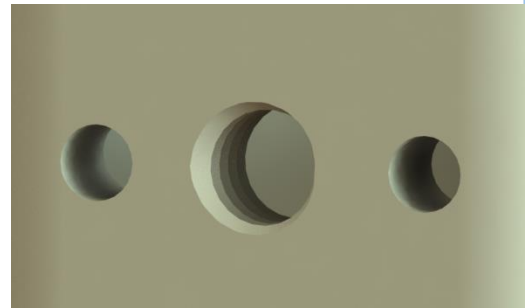
PEEK-OPTIMA™ HA Enhanced

Better Bone Apposition

Earlier bone ongrowth with >75% direct bone contact after 4 weeks and enhanced bone apposition at 12 weeks

Superior Control

Threaded inserter attachment with additional control surfaces ensure precise implant placement



Integrated HA

Fully integrated HA means an osteoconductive surface throughout the implant (surface at x1800 magnification)



order@spinedirectonline.com

877-888-SPINE